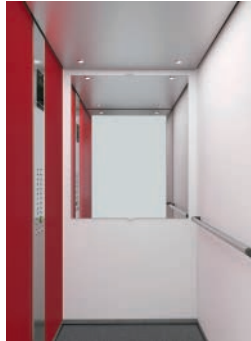


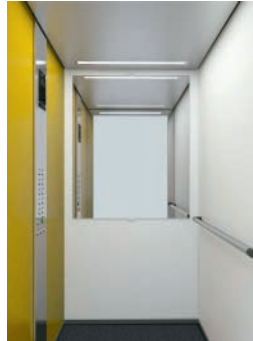
# Reference Packs



DR10



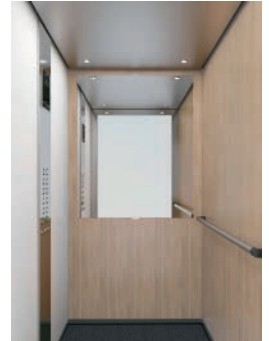
DR11



DR12



DR13



DR14



DR15



DR16

# Selection Packs



DS10



DS11



DS12



DS13



DS14

# Orona 3G Domo Packs

## REFERENCE PACKS

## SELECTION PACKS

DR10 DR11 DR12 DR13 DR14 DR15 DR16 DS10 DS11 DS12 DS13 DS14

### CEILING AND LIGHTING

MODEL	LED	UP19	•	•	•	•	•	•	•	•	•	•	•
	LED Spotlights	UP37	○	•	○	•	•	○	○	○	○	○	•
	LED panel (200x200 mm)	UP41								•		•	
	LED panel (600x600 mm)	UP67 UP73		○			○					•	○
CEILING MATERIAL	ST01 St St Base		•	•	•	•	•	•	•	•	•	•	•
	ST02 St St Plus		○	○	○	○	○	○	○	○	○	○	○
OTHERS	Automatic lighting switch-off		•	•	•	•	•	•	•	•	•	•	•
	Emergency hatch		○	○	○	○	○	○	○	○	○	○	○
	Fan		○	○	○	○	○	○	○	○	○	○	○

### CAR WALLS

PANELS	Neocompact Colour	NC02 Red Autumn		•P						•F				
		NC03 White Snow	•	•F/L	•F/L	•F/L	•P	•L/P					•L/P	
		NC25 Warm Green			•P									
	Neocompact Wood	NC15 Oak Tree					•F/L							
		NC21 Oak White										•		
		NC22 Oak Grey				•P								
	Neocompact Texture	NC16 Linen Pure									•			
		NC17 Grey Storm												
		NC18 Night Garden							•F				•F	
		NC24 Tissue									•L/P			
	Panel Stainless	ST01 St St Base												•
		ST02 St St Plus												○
	Others	Without cladding (for local fit out)	○	○	○	○	○	○	○	○	○	○	○	○
		Tip-up seat	○	○	○	○	○	○	○	○	○	○	○	○
		2 Entrances or 'Through car' for 180, 'Front/Adjacent' for 90&270	○	○	○	○	○	○	○	○	○	○	○	○

### CAR OPERATING PANELS AND INDICATORS

CAR INDICATOR	7 Segment	•	•	•	•	•	•	•	•	•	•	•	•
	Dot-matrix									•	•	•	•
	Car direction arrows	•	•	•	•	•	•	•	•	•	•	•	•
	Overload indicator (buzzer & light)	•	•	•	•	•	•	•	•	•	•	•	•
	Direction arrows on entrance return	○	○	○	○	○	○	○	○	○	○	○	○
	Car gong	○	○	○	○	○	○	○	○	○	○	○	○
	Voice synthesizer	○	○	○	○	○	○	○	○	○	○	○	○
CAR OPERATING PANEL MATERIAL	ST01 St St Base	•	•	•	•	•	•	•	•	•	•	•	•
	ST02 St St Plus	○	○	○	○	○	○	○	○	○	○	○	○
CAR PUSH BUTTONS	Door close push button	○	○	○	○	○	○	○	○	○	○	○	○
	Braille push button	•	•	•	•	•	•	•	•	•	•	•	•
	Key switch push button (Standard or eurocylinder)	○	○	○	○	○	○	○	○	○	○	○	○
	External call cancelling	○	○	○	○	○	○	○	○	○	○	○	○
	Coded call	○	○	○	○	○	○	○	○	○	○	○	○
LANDING INDICATOR	7 Segment	•	•	•	•	•	•	•	•	•	•	•	•
	Dot-matrix									•	•	•	•
	Next departure indicator	○	○	○	○	○	○	○	○	○	○	○	○
LANDING PUSH BUTTONS	Landing gong	○	○	○	○	○	○	○	○	○	○	○	○
	Key switch push button (Standard or eurocylinder)	○	○	○	○	○	○	○	○	○	○	○	○
CAR OPERATING PANEL	Surface mounted push button	○	○	○	○	○	○	○	○	○	○	○	○
	Horizontal car operating panel	○	○	○	○	○	○	○	○	○	○	○	○

### MIRRORS

MIRRORS	MH (Mirror 1/2)	•F	•F	•F	•F	•F	•F	•F	•F	•F	•F	•F	•F
	MT (Mirror 3/4 narrow)									•F	•F	•F	•F
	Rear-view mirror (EN 81-70)	○	○	○	○	○	○	○	○	○	○	○	○
FINISH	O1 Clear	•	•	•	•	•	•	•	•	•	•	•	•

### HANDRAILS

HANDRAILS	HR01 (Aluminium tube)	•L	•L	•L	•L	•L	•L	•L	•L				
	HR02 (Aluminium tube)									•F/L		•F/L	•F/L
	HR04 (Stainless steel tube)									•F/L		•F/L	

### FINISHES

SKIRTINGS	SK01 Anodized Aluminium (St St finish)	•	•	•	•	•	•	•	•	•	•	•	•
DOOR MATERIALS (car and landing)	ST01 St St Base	•	•	•	•	•	•	•	•	•	•	•	•
	ST02 St St Plus	○	○	○	○	○	○	○	○	○	○	○	○
	Primed sheet (landing door)	○	○	○	○	○	○	○	○	○	○	○	○
DOOR PANEL TYPE	Standard panel (not big vision)	•	•	•	•	•	•	•	•	•	•	•	•

### FLOORS

SC-PVC HIGH	SC04 Grey Storm			•	•	•	•	•	•	•	•	•	•
	SC05 Grey Silver	•	•										•
OTHERS	Prepared for granite	○	○	○	○	○	○	○	○	○	○	○	○
	Prepared for PVC	○	○	○	○	○	○	○	○	○	○	○	○

Orona 3G

# Domo PLUS

Ceilings and lighting LED - Automatic lighting switch-off included

## MODEL

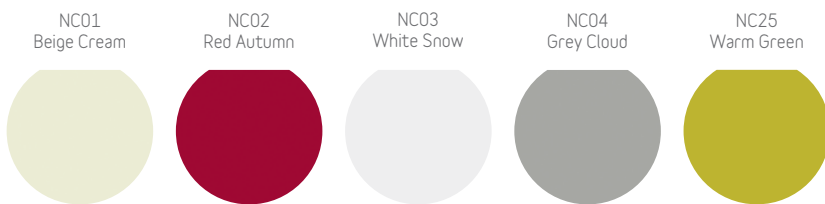


## OTHERS

- Emergency hatch (UP37-UP41)
- Fan

## Car walls

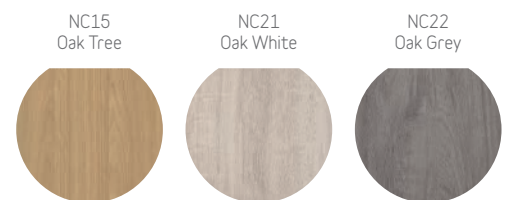
### NEOCOMPACT COLOUR



### NEOCOMPACT TEXTURE



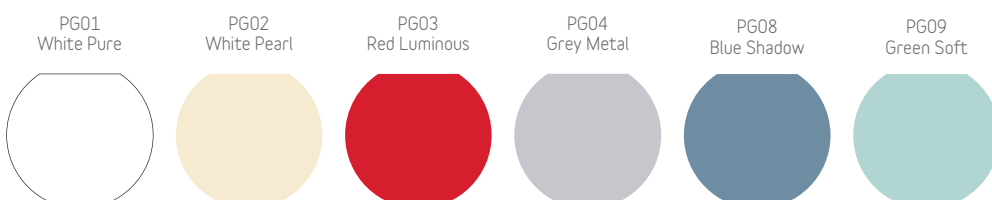
### NEOCOMPACT WOOD



### PANEL STAINLESS



### GLASS AMBIENCE



## OTHERS

- Without cladding (for local fit out)
- Tip-up seat
- 2 Entrances or 'Through car' for 180, 'Front/Adjacent' for 90 & 270

## Car operating panel



### OTHERS

- Double car operating panel
- Horizontal car operating panel

## Car indicator



7 Segment



Dot-matrix



TFT

### OTHERS

- Car direction arrows
- Overload indicator (buzzer & light)
- Voice synthesizer
- Direction arrows on entrance return
- Car gong
- Directory
- Inductive acoustic coupler

## Landing indicator



7 Segmentos



Matriz puntos



TFT



Wall landing indicator

### OTHERS

- Next departure indicator
- Landing gong

## Car push buttons



Orona Braille circular model



Model with additional contrast

### OTHERS

- Door close push button
- Key switch push button (Standard or eurocylinder)
- External call cancelling
- Coded call

Orona 3G Series push buttons are water-resistant (IPX3 under EN 60529) and have fully passed the impact and fire tests defined in the EN 81-71 standard.

For enhanced anti-vandalism resistance needs (Category 1), Orona offers its comprehensive PPSS 03G anti-vandalism solutions, which comply with the EN 81-71 standard in its entirety (push buttons, displays, doors, lighting, ceilings, walls, floors, mirrors, enclosures, etc.).

## Landing push buttons



Push buttons to suit the lifts control type (1 or 2 push buttons)



Key switch push button (standard or eurocylinder)



Surface mounted push buttons

## Mirrors

MH (Mirror 1/2)  
 MT (Mirror 3/4 narrow)  
 Rear-view mirror (EN 81-70)

### FINISH

01 Clear  
 02 Smoked

## Bumprails

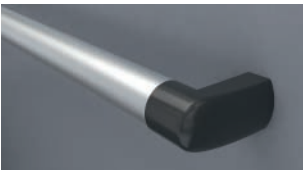
Wood  
 Stainless steel  
 PVC  
 Double bumprail

## Skirtings

SK01 Anodized Aluminium (St St finish)  
 SK02 Lacquered Aluminium

## Handrails

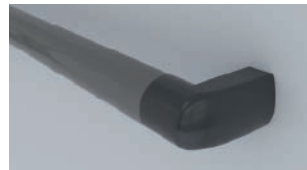
HR01 (Aluminium tube)



HR02 (Aluminium tube)



HR03 (Aluminium tube)



HR04 (Stainless steel tube)



## Car operating panel material and/or ceiling and/or doors (car and landing)

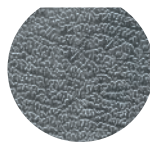
ST01  
St St Base



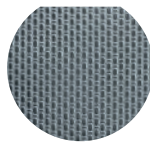
ST02  
St St Plus



ST03  
St St Elephant Skin Pattern



ST04  
St St Linen Pattern



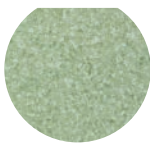
## Floors

### SC-PVC HIGH

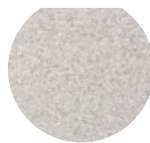
SC01  
Red Cherry



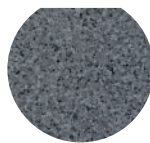
SC02  
Green Leaf



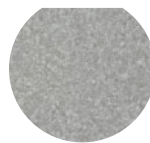
SC03  
Grey Ice



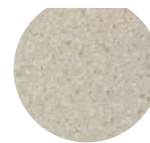
SC04  
Grey Storm



SC05  
Grey Silver



SC06  
Beige Sand



SC07  
Black Circles



### SW CERAMICS · Available subject to dimensions

SW01  
Black Basalt



SW02  
Grey Cement



SW03  
Grey Pearl



SW04  
Beige Basalt



SW06  
Brown Earth



### OTHERS

- Prepared for granite (23 mm)
- Prepared for PVC (23 mm or 3 mm in restricted pits)